

A blurred high-speed train, likely a Shinkansen, is captured in motion on the right side of the frame. The train's windows and exterior are streaked with light, suggesting speed. In the foreground, a black street lamp with two glowing spherical lights stands on a sidewalk. To the left, a concrete barrier runs along the edge of the platform. In the background, a city skyline is visible against a bright orange and yellow sunset sky. The sun is a large, bright orb on the left, casting a warm glow over the entire scene.

California Transit Works!

A Brief Overview



www.catransitworks.org

CTW Principles

Industry Driven

Worker Centered

Community Oriented

Measurable Results



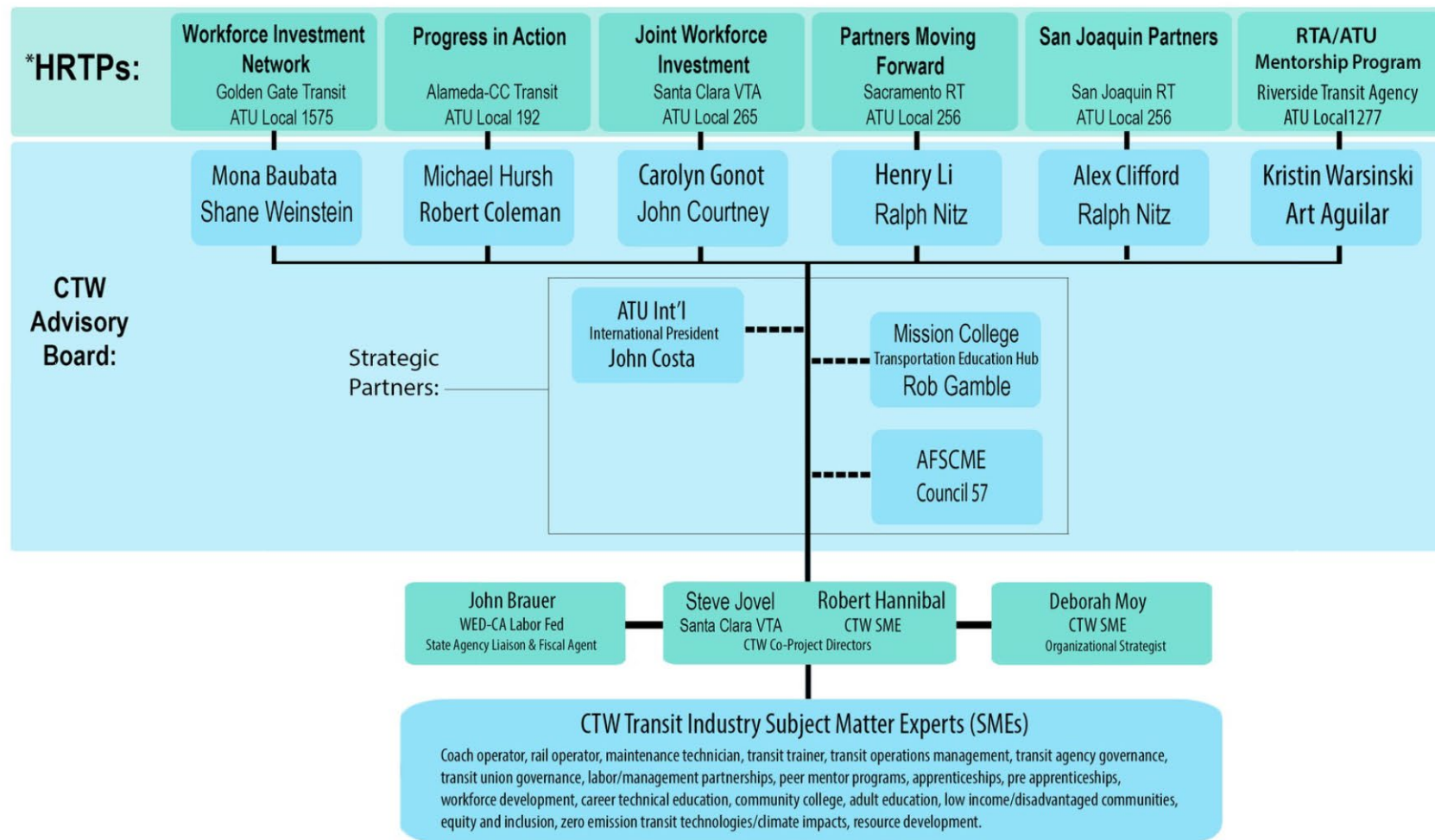


www.catransitworks.org



California Transit Works!

Consortium Structure



***HRTTP = High Road Training Partnership.** CTW defines transit HRTTPs as labor/management partnerships that are industry driven, worker centered, community oriented, and with measurable results. CTW is part of the California Workforce Development Board's statewide HRTTP Initiative.



www.catransitworks.org



Status of Battery and Fuel Cell Electric Buses in California Transit Agencies (132 in operation and 655 on order, awarded or planned as of May 2018)





www.catransitworks.org



Status of Battery and Fuel Cell Electric Buses in California Transit Agencies (132 in operation and 655 on order, awarded or planned as of May 2018)

Battery and Fuel Cell Electric Buses in California (Last Updated: 5/17/2018)								
#	Transit Agencies	Total Buses ^(a)	Headquarters	Operating		On Order, Awarded or Planned		100% Zero Emission Target Year
				FCEB	BEB	FCEB	BEB	
1	Alameda-Contra Costa Transit District (AC Transit)	813	Oakland	13	0	11	50	
2	Anaheim Resort Transportation	82	Anaheim	0	4	0	44	2019/2020
3	Antelope Valley Transit Authority (AVTA)	77	Lancaster	0	14	0	75	2018
4	Central Contra Costa Transit Authority (CCTA)	199	Concord	0	4	0	4	
5	City of Modesto Transit Division	76	Modesto	0	0	0	4	
6	City of Shafter	4	Shafter	0	0	0	4 ^(c)	
7	Eastern Contra Costa Transit Authority (Tri Delta Transit)	86	Antioch	0	0	0	2	
8	Fairfield and Suisun Transit (FAST)	61	Fairfield	0	0	0	12	
9	Foothill Transit	373	West Covina	0	30	0	20	2030
10	Fresno Area Express	142	Fresno	0	0	0	6	
11	Fresno County Rural Transit Agency (FCRTA)	80	Fresno	0	6 ^(c)	0	7	
12	Golden Empire Transit District (GETbus)	107	Bakersfield	0	0	0	3	
13	Gtrans	65	Gardena	0	6	0	0	
14	Humboldt Transit Authority ^(d)	24	Eureka	0	1	0	0	
15	Long Beach Transit	224	Long Beach	0	10	0	10	
16	Los Angeles County Metropolitan Transportation Authority (LA Metro)	2452	Los Angeles	0	0	0	105	2030
17	Los Angeles Department of Transportation (LADOT)	357	Los Angeles	0	4	0	114	2030
18	Marin County Transit	116	San Rafael	0	0	0	2	
19	Monterey-Salinas Transit (MST)	149	Monterey	0	1	0	2	
20	Napa Vine Transit Authority (NVTA)	65	Napa	0	0	0	5	
21	North County Transit District (NCTD)	204	Oceanside	0	0	0	5	
22	Norwalk Transit System	41	Norwalk	0	0	0	2	
23	Orange County Transportation Authority (OCTA)	879	Orange County	1	0	10	0	
24	Porterville Transit	20	Porterville	0	0	0	12	2025
25	Sacramento Regional Transit District (SacRT) ^(e)	224	Sacramento	0	0	0	24	
26	San Diego Metropolitan Transit System (MTS)	795	San Diego	0	0	0	17	
27	San Francisco Municipal Transportation Agency (SFMTA)	620 ^(f)	San Francisco	0	0	0	0	2035
28	San Joaquin Regional Transit District (RTD)	111	Stockton	0	12	0	5	2025
29	San Mateo County Transit District (SamTrans)	369	San Carlos	0	0	0	47	2033
30	Santa Barbara Metropolitan Transit District (MTD)	112	Santa Barbara	0	14	0	4	
31	Santa Clara Valley Transportation Authority (VTA)	485	San Jose	0	5	0	5	2033
32	Santa Cruz Metropolitan Transit Districts (Metro)	98	Santa Cruz	0	0	0	4	2040 ^(b)
33	Santa Monica Big Blue Bus (BBB)	200	Santa Monica	0	0	0	11	2030
34	Santa Rosa CityBus	32	Santa Rosa	0	0	0	2	
35	Redding Area Bus Authority (RABA)	34	Redding	0	0	0	7	
36	Solano County Transit (SolTrans)	53	Vallejo	0	2	0	8	
37	Sonoma County Transit	48	Santa Rosa	0	0	0	1	
38	SunLine Transit	112	Thousand Palms	8	3	8	4	
39	Visalia Transit	58	Visalia	0	0	0	3	
	Total	9427		22	110	29	626	



www.catransitworks.org



SANTA ROSA
JUNIOR COLLEGE

COLLEGE OF
MARIN



CALIFORNIA TRANSIT WORKS!



Golden Gate Transit Bus Operator Pre-apprenticeship & Apprenticeship Programs

Mona Babauta, Deputy General Manager-GGT
Mbabauta@goldengate.org





www.catransitworks.org

GGT-ATU-CTW Partnership

GGT Workforce Challenges:

- Growing transit service as we come out of the COVID-19 Pandemic
- Attrition rate is outpacing our hiring rate
- Reliable attendance for ensuring system reliability/schedule adherence
- Attracting new, skilled talent using historic recruitment & hiring practices

Innovation in finding, training and retaining talent:

- Minimizing/removing barriers to employment & equity (identified via data gathering)
- Reaching out to talent, instead of waiting for them to come to us
- Enhanced employee training & mentoring – setting them up for success as a retention tool
 - Using CTW as a resource in facilitating discussions and partnerships with labor and community colleges
 - Bus Operator Pre-apprenticeship Program - focused on aggressive community outreach in disadvantaged communities/priority populations, relationships with community-based organizations, and preparing employees for Bus Operator Apprenticeship (Santa Rosa Junior College)
 - Growing Apprenticeship Program by including college credit element (College of Marin)
 - Supporting and involving our Mentors and ATU Leadership in program design & implementation





www.catransitworks.org



MISSION
COLLEGE
SANTA CLARA

Through Apprenticeship H RTP has landed at Mission College

7 Transits Apprenticeships
5 CTE Certificates
3 Non-Traditional Apprenticeships

Investments from California Apprenticeship Initiative, Strong Workforce, California Air Resources Board, American Apprenticeship Initiative (DOL)





www.catransitworks.org



MISSION
COLLEGE
SANTA CLARA

Mission College Public Transit Education Hub

Designed to assist Colleges, Labor and Transit Agencies build Public Transit Apprenticeships in the H RTP model

Funded through California Community Colleges Chancellor's Office



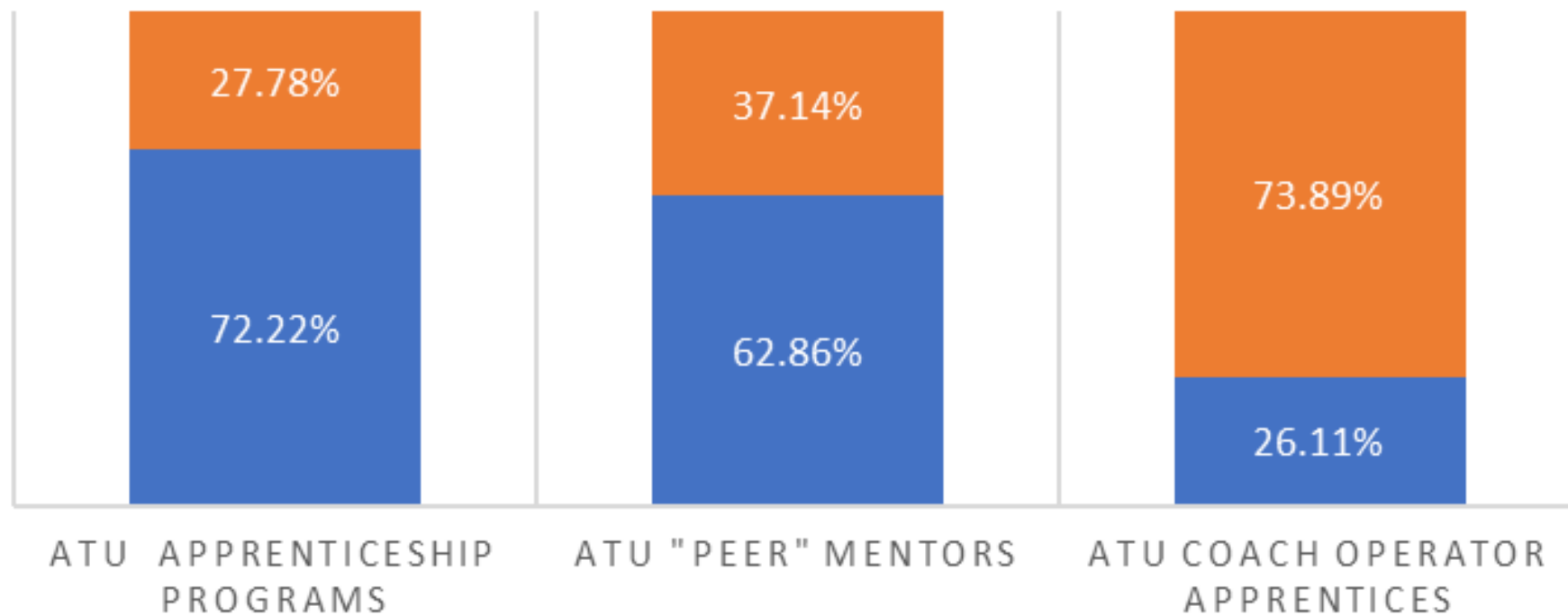


www.catransitworks.org



SNAPSHOT OF ATU APPRENTICESHIPS

■ Outside of California ■ California





www.catransitworks.org



CTW Current & Emerging H RTP sites

