

STATE WORKFORCE BOARD PRESENTATION

Teresa Hitchcock

Assistant County Administrative Officer
Kern County Division of Economic & Workforce Development



AJCC Comprehensive One-Stop Centers

Bakersfield • Delano • Ridgecrest

America's **JobCenter**
of CaliforniaSM

*Serving Kern,
Inyo & Mono
Counties*

Kern County Affiliate Sites

- EPIC Youth Center*
- Lake Isabella
- Lamont
- Mojave
- Oildale
- Shafter
- Taft
- The Business Center*
- Veterans Center*

** In Bakersfield*

Mono County Affiliate Sites

- Mammoth Lakes
- Walker

Inyo County Affiliate Site

- Bishop



**We Cover
21,000
Square Miles**

www.americasjobcenterofkern.com



Better Bakersfield & Boundless Kern (B3K)

is a collaboration among business, government, and civic stakeholders to create and deliver a joint strategy and operational/investment plan for regional economic growth and opportunity, centered on promoting quality job creation that is enduring and accessible to all residents.

www.b3kprosperity.org

B3K

*Regional Action for
Economic Prosperity*





Community Engagement & Conversations

B3K's success is directly tied to broad community engagement and support, and we welcome insights and perspectives about our region's future. Opportunities for engagement may include participating on a B3K Prosperity committee, joining a subject matter Working Group or simply offering input through a B3K Prosperity survey or outreach activity.



Partners

B3K is an effort designed to engage partners that are representative of the Kern County's communities, existing and emerging industries, local governments, and education and workforce development systems.



Resources

B3K will produce an evidence-based market assessment, an action-oriented roadmap with goals and tactics, and an operational and investment plan. The B3K Market Assessment is a comprehensive data book highlighting the economic challenges and opportunities for the region is now available.



B3K

*Regional Action for
Economic Prosperity*


**B3K
PROSPERITY
CORE TEAM**


**B3K
PROSPERITY
COMMITTEES**


**B3K
PROSPERITY
WORKING
GROUPS**



KERN INITIATIVE FOR TALENT + ENTREPRENEURSHIP

Kern Initiative for Talent + Entrepreneurship

KITE (KITE) is a network of professionals who recognize the importance of entrepreneurship in our community. They help current and future entrepreneurs in Kern County access guidance and resources so they can build successful businesses

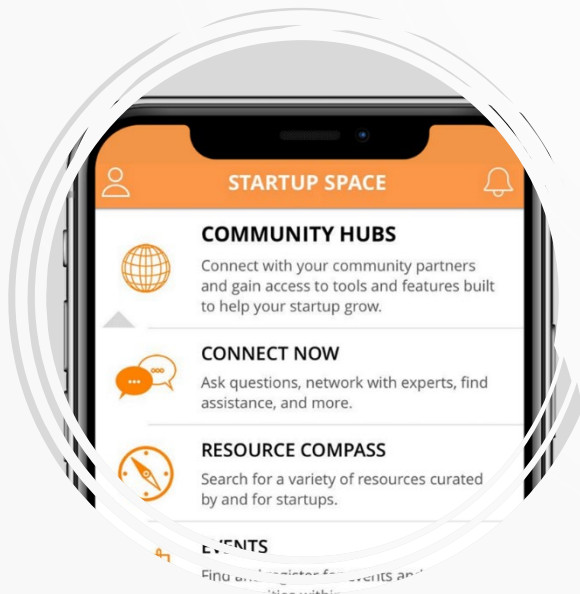
www.gokite.org

*Explore, Launch & Grow
Your own Business*



Developing Successful Entrepreneurs

KITE network of professionals recognizes the importance of entrepreneurship in our community and provide guidance and resources to solve those problems as they start and grow their business.



KITE offers mentorship programs, networking events, access tools, guidance, and industry-specific resources needed for their entrepreneurial journey, including a (Startup Space App) and more

KITE is a project of SeedCore Foundation, a 501(c)(3) not-for-profit corporation in partnership with Kern Economic Development Corporation





Bitwise
INDUSTRIES



BAKERSFIELD
THE SOUND OF *Something Better*



Bitwise Industries

Is a technology business incubator designed to nurture diverse entrepreneurs, and is home to a six-month-long cohort experience focused on creating new businesses and jobs locally.

Along with providing workforce development and skills training for target industries, the Innovation Lab also fosters continued collaboration amongst economic development partners that benefit the local community and economy instruction & training



Helps to build tech economies in underestimated communities by offering Apprenticeship Programs to help bridge the gap between learning and working in the tech industry.

Participants in this paid program work on real projects under the supervision of seasoned technical leads.

They are mentored and taught how to start and grow a new business that they develop.

www.bitwiseindustries.com



Bitwise Industries

BITWISE INDUSTRIES
BAKERSFIELD

HR Hotline

Is an information line for local businesses to call when they have a question that helps them to run their business properly; provides Human Resources answers; and offers assistance with their business needs.

Micro-Business COVID-19 Relief Grant Program

For businesses with 0-4 full time employees, a [\\$2,500](#) grant to assist them with business recovery if they have been affected by COVID-19 closures and shut downs during the pandemic.

Small Business Supports



On-the-Job Training Opportunities

Allows local businesses to hire new employees that require additional training to better qualify them for their job opportunities. Employers train them while on the job as an already on-board, paid employee while receiving financial assistance from Employers' Training Resource through Workforce Innovation and Opportunity Act (WIOA) federal funds.



**Earn &
Learn Work
Based**

Training Models



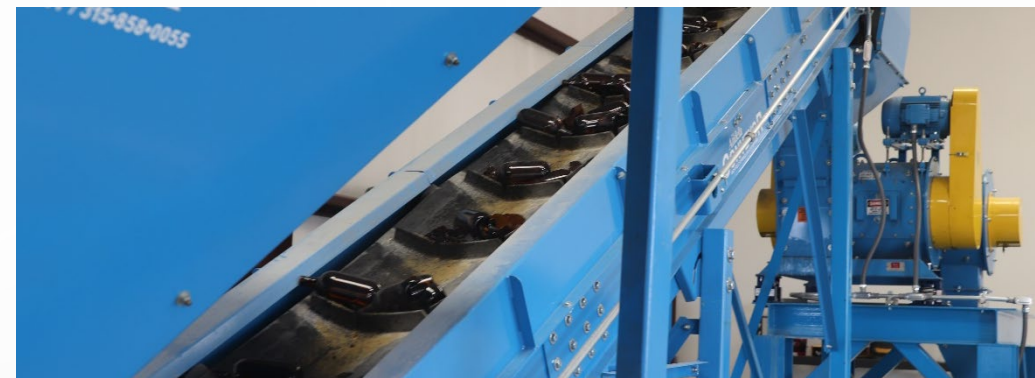
Recycling Lives

Was formed with Kern Alliance of Business, the not-for-profit entity of Employers' Training Resource with the intent to break the cycle of homelessness, poverty and incarceration by recycling lives and glass in Kern County. Recycling Lives installed a Glass Pulverize System to turn volumes of waste glass into fine sand and glass cutlets to be sold in bulk to private businesses, local cities and to the County of Kern to be used in public work projects.

Through a unique partnership between Bakersfield Adult School, BARC, County of Kern and Kern Alliance of Business, Recycling Lives offers a classroom training program that provides adult learners with the principles of the recycling process, including entrepreneurship and business fundamentals. The Recycling Lives program includes classroom training on basic safety and equipment operation (which includes certification on Skidsteers and different types of forklifts), soft skills, basic work readiness, basic accounting, warehousing, sales and marketing. The participants will also learn goal setting, resource allocation, organized structure and management techniques.

Transitional Jobs Programs





**MACHINED TO
REMOVE ALL
SHARP EDGES**



**SAFE TO USE IN
CHILDREN'S PLAY
AREAS**



**MADE FROM
RECYCLED
MATERIALS**



**PROVIDES COLOR &
FRICTION FOR ROAD
DEMARCATON**



**BETTER THAN
SAND FOR
BLASTING**



**MULTIPLE COLORS
AND SIZES**





Laborers of the Harvest (LOTH)

LOTH is a not-for-profit 501 (c)(3) organization that works tirelessly to help feed those in need by participating in food recovery. Food recovery means collecting edible food that would otherwise go to waste and redistributing it to feed people in need.

LOTH collects food through gleaning and direct contributions. They organize what they receive and then hand it all out twice a week to those in need. They are a volunteer-based organization and depend solely on people giving of their precious time to collect, transport, organize and distribute all the food as well as handle all the administrative functions that are required. They currently operate exclusively on the generous donations of local people and companies who embrace our vision of a community without hunger. Employers' Training Resource will be beginning a transitional jobs program with LOTH to train and prepare participants for jobs in distribution, warehousing and transportation of recovered food items.

Transitional Jobs *Programs*





VALLEYBUILD



Multi-Craft Pre-Apprenticeship Training Program (SB1)

The County of Kern, Employers' Training Resource, Valley Build and multiple local trade unions have partnered to establish a short-term pre-apprenticeship training program to train participants in various trades to give them an idea about the career opportunities in construction related fields. Through [ValleyBuild.net](https://valleybuild.net) the program participants will be introduced to and trained in skills related to cement masons, iron workers, electricians, plumber/pipefitters, brick layers, operating engineers, sheet metal workers, welders, teamsters and painters.

Transitional Jobs

Programs





US Department of Energy – LEAP (Local Energy Action Program)

Participating in the LEAP Program would be the first such initiative to explicitly align with the economic development and social equity priorities of the County's B3K Prosperity economic development collaboration to create new sectors.

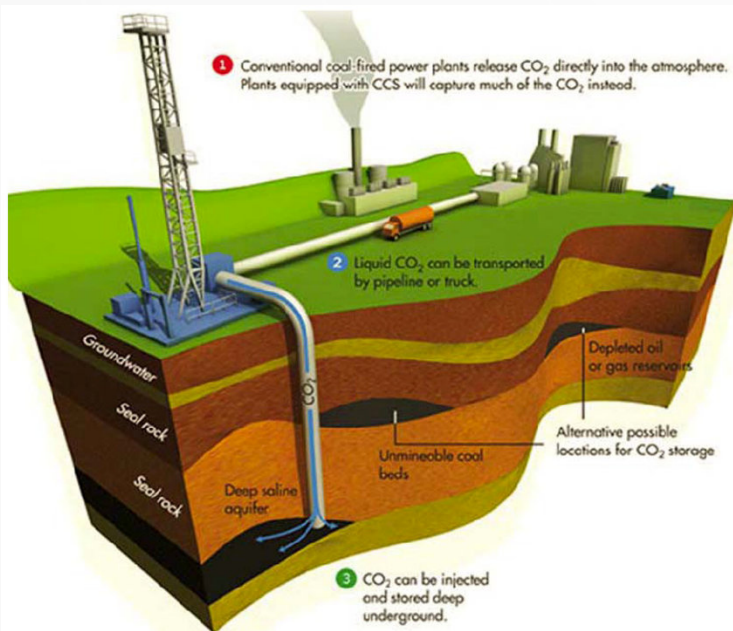
The LEAP Technical Assistance Grant seeks to help communities access the economic and environmental benefits of clean energy and clean energy manufacturing. Opportunities and potential benefits include lower local air pollution, lower utility costs and energy burdens, improved access to reliable energy, enhanced economic productivity, and new clean energy supply chain and manufacturing.

Transitional Jobs *Programs*



A proposed industrial park could pull carbon dioxide out of the atmosphere and send it by pipeline to somewhere it can be buried permanently. The LEAP Technical Assistance would allow the federal government to help Kern County determine what it would take, in terms of acreage, water, workforce training, and renewable energy to set up a Carbon Capture and Sequestration (CCS) facility on non-irrigated farmland in western or eastern Kern County and what is the best technology to pursue and how it could be scaled up efficiently.

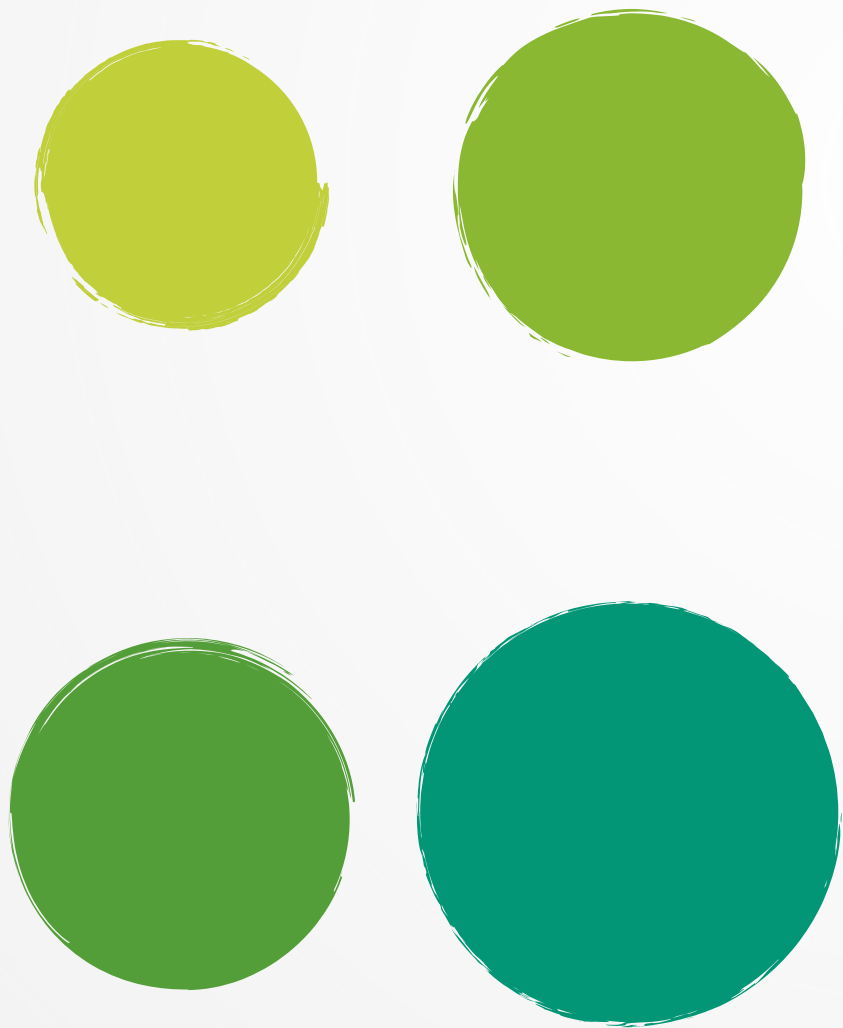
Transitional Jobs Programs



It would provide technical assistance for the accelerated track on carbon capture for a pre-feasibility study on a carbon management and storage industrial park concept in Kern County and could potentially lead to a brand-new sector in the County and thousands of new jobs to support the new industry.

The County and local oil producers consider new job opportunities CCS projects offer and what skills they require for deploying their technical expertise, infrastructure and trained workforce.





THANK
YOU

EMPLOYERS'
TRAINING
RESOURCE

A PROUD PARTNER OF

America's **JobCenter**
of CaliforniaSM



WORKFORCE
DEVELOPMENT
BOARD

Employers' Training Resource (ETR), a proud partner of America's Job Center is a Department within the County of Kern which serves as the administrative arm of the Kern/Inyo/Mono Counties Workforce Development Board. ETR is funded through the federal legislation - Workforce Innovation and Opportunity Act (WIOA) 2014.

WIOA is designed to help job seekers access employment, education, training, and support services to succeed in the labor market and to match employers with the skilled workers they need to compete in the global economy

WIOA

Partners

- Bakersfield Adult School
- Bakersfield College
- California Indian Manpower Consortium, Inc.
- Cerro Coso Community College
- Community Action Partnership of Kern
- Cornerstone Solutions, Inc. - Job Corps Services
- Delano Joint Union High School District
- Department of Rehabilitation
- Employers' Training Resource
- Employment Development Department
- Farmworker Institute of Education & Leadership Development
- Housing Authority of the County of Kern
- Inyo County Health & Human Services
- Kern Community College District
- Kern County Behavioral Health & Recovery Services
- Kern County Department of Human Services
- Kern County Superintendent of Schools
- Kern County Veterans Services Department
- Kern High School District
- Latino Coalition of Community Leadership
- Mexican American Opportunity Foundation
- Mono County Social Services
- Proteus Inc.
- SER - Jobs for Progress, Inc.
- Taft College (West Kern Community College District)
- Tehachapi Unified School District



Kern County Labor Statistics

State of California, Employment Development Department, 2019 Average

KERN GROWTH IN EMPLOYMENT (2012-22)



Labor Force **381,800**

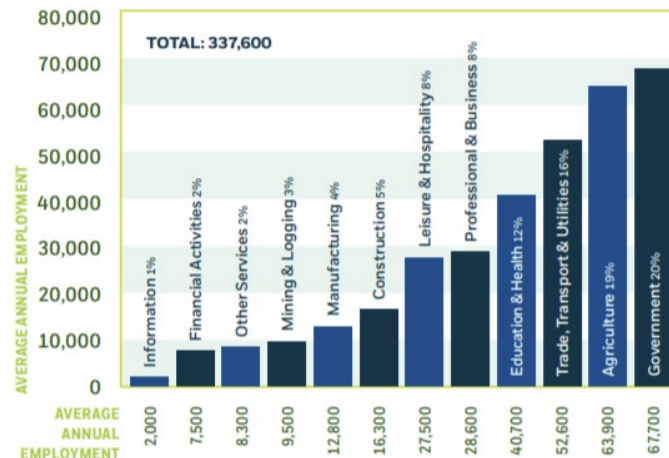
Employed **346,300**

Unemployed **35,600**

Unemployment Rate **9.3%**

Average Weekly Wage **\$968**

COUNTY ANNUAL AVERAGE EMPLOYMENT BY INDUSTRY



Kern

By the Numbers

In 2019, Kern's Gross Domestic Product reached \$51.4 billion, according to data collected by the Bureau of Economic Analysis



Industry employment in Kern County is projected to reach 391,800 by 2024, an increase of 16.1% over the next ten years. Total non-farm employment is projected to grow by more than 41,200 jobs by 2024