

The Capital Consortium

- 14 Members
 - 11 K-12 Districts
 - 2 County Offices of Education
 - 1 Community College District
 - 4 Community Colleges
- 22 Partners
- 4 Counties: Sacramento, El Dorado, Amador, and Yolo

The Members



3

The Members



4

The Partners

- Alta California Regional Center
- Black Oak Mine
- Building Skills Partnership
- California Department of Corrections and Rehabilitation
- California Department of Developmental Services
- California Human Development
- California State Library
- Capital Region Academies for the Next Economies (CRANE)
- El Dorado County Library
- El Dorado Union High School District
- Greater Sacramento Urban League



5

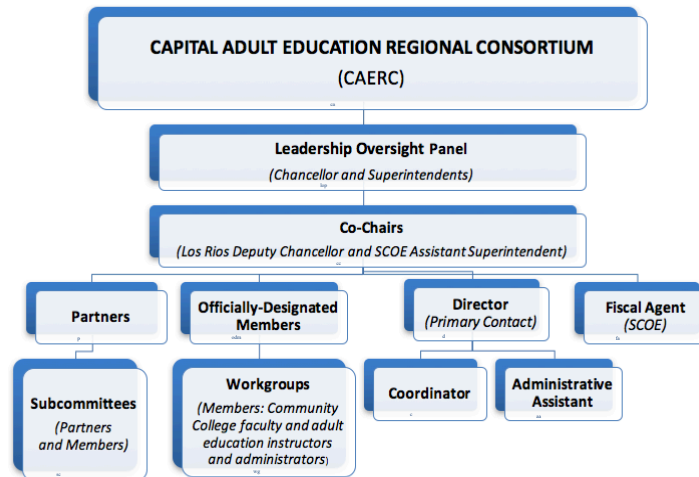
The Partners

- Highlands Community Charter and Technical Schools
- La Familia Counseling Center
- Mexican Consulate
- Outreach and Technical Assistance Network (OTAN)
- Sacramento Employment and Training Agency (SETA)
- Sacramento ESL Program
- Sacramento Food Bank and Family Services
- Sacramento Job Corps
- Sacramento Public Library Authority
- Yolo County Library
- Yolo County Office of Education



6

CAERC Organizational Structure



Collaborate for Success

AB 86

- Assess community needs
- Prioritize needs and dedicate resources
- Build a strategic plan with stakeholders

Adult Block Education Block Grant (AEBG)

- Year 1: Build a Strong Foundation
- Year 2: Align and Rethink
- Year 3: Enhance Services and Instruction

AEBG Program Areas

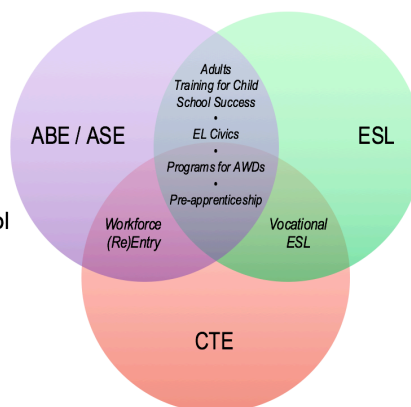
AEBG Program Areas

Core Programs

- ABE / ASE
- **ESL (Includes EL Civics and VESL)**
- CTE

Special Programs

- Adults Training for Child School Success
- Programs for Adults with Disabilities
- Workforce (Re)Entry
- Pre-apprenticeship



Regional Priorities

1 Build and expand adult education offerings

CAERC will use **85%** of funding it receives to bring back adult ed classes cut during the recession and expand offerings to meet each community's unique needs. Adult students will see increased offerings in:

- English as a second language
- Adult basic and secondary education
- Career technical education
- Pre-apprenticeship training
- Services for adults with disabilities



3 Increase student support services

CAERC will invest in providing student services to reduce the barriers adult learners may face as they pursue academic or career goals.



2 Develop alignment and pathways

CAERC will coordinate and align programs and pathways. CAERC will develop a Regional Asset Map, an online tool at www.capitaladulthood.org that identifies adult ed programs offered in the region, making for seamless pathways among members and partners.

Adult students can expect these benefits:

- Alignment of curricula
- Easier to enroll & transfer credits
- Clear steps for individual students



4 Enhance data and accountability systems

New data and accountability systems will show the effectiveness of CAERC's work, and the areas in which the consortium can continue to grow:

- Employment & demographic data will help identify community needs
- Student results will be tracked to measure CAERC's success



A Perspective Shift

It's a regional collaborative effort...



11

A Perspective Shift

... so leave no one behind!



Capital
Adult Education
Regional Consortium

12

Reciprocity is the Glue!

“Accountability must be a reciprocal process. For every increment of performance I demand from you, I have an equal responsibility to provide you with the capacity to meet that expectation. Likewise, for every investment you make in my skill and and knowledge, I have a reciprocal responsibility to demonstrate some new increment in performance.”

Richard Elmore (2000)

CAERC's Regional Plan 2016-17

Goals:

- ***Reaffirm and Strengthen Existing Partnerships***
- ***Establish New Partnerships***

Regional Strategies:

- ✓ Regional Asset Map and Pathways Roadmap
- ✓ Special Projects Request for Funding Project
- ✓ Increase Support Services to Ensure Student Success
- ✓ Professional Development
- ✓ Marketing and Outreach

Capital Adult Education



Special Projects RFP

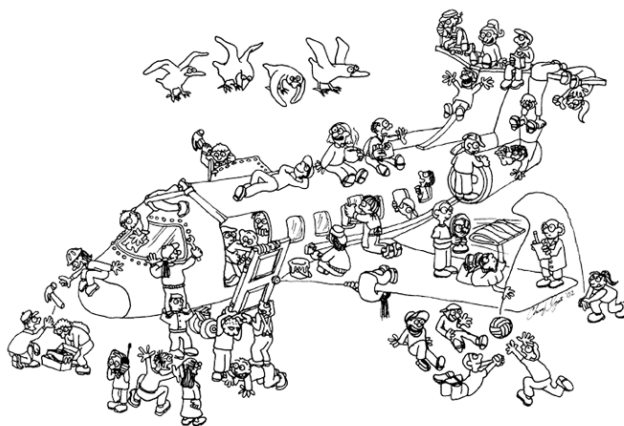
Request for Proposals invites submissions for special projects from Members and Partners to:

- Support regional priorities and strategies;
- Address needs of underserved adult populations in the region;
- Foster evidence-based best practices and collaboration across systems.

Funding Available: \$150,000

AEBG has been like ...

“Building the plane while it’s flying in the air!”



By the Numbers

English Language Learner Enrollment

ELL Enrollment	2008-09	2013-14	2015-16
CAERC AE EL	27,579	13,530	TBD
SCUSD AE EL	5,641 46%	446 4%	559 7% 20% of CAERC's \$ \$1,079,980
SCUSD K-12 EL	12,362	10,222	8,600

Amador County

AEBG Expansion Goals: ESL and Citizenship

- Rural population, 97% White, vineyard industry
- 81% of ELs (K-12); Spanish is the primary language

Plymouth ELL Community Outreach Meeting

Summer 2016 ➤ ➤ ➤ *Fall 2016* ➤ ➤ ➤ *Spring 2017*
Phase 1 Phase 2 Phase 3



20

Literacy ► Citizenship ► Workforce



*Congressman Ami Bera visits San Juan Adult Education's
Citizenship class to share his family's immigration story.*



21

Work in Progress

Collaboration
is not about gluing together
existing egos. It's about the
ideas that never existed until
after everyone entered the room.

@DailyDose